

## ■ Panel Solution

### ■ Category 5e Patch Panel, unshielded & shielded version Category 6 Patch Panel, unshielded & shielded version

#### ● Features:

- 110 & Krone Dual Block.
- Color-coded for T568A and T568B wiring schemes.
- Significant margin over TIA/EIA-568B & ISO/IEC 11801 standard.
- Color coded icon identification sticker for installation.
- They allow flexible grounding for shielded cable for each IDC pin.
- Writable & erasable marking surface for each port on the front panel.
- All panels are powersum swept frequency tested.
- Shielded panels incorporate 360° stainless steel for full EMI. (Electro-magnetic Immunity) shielding required by EN 50173.

#### ● Physical Specifications

- High-density 1U, 19" RMS (rack mount standard) for 24 ports panel.
- Meet EIA-310-D specifications.
- Apply UL 94V-0 high-impact, fire-retardant ABS material.
- A pair punch sequence enables a pair twist within 1/2" of termination.
- Beryllium Copper Contact: 50 micro inch ( $\mu$ " ) gold-plated pins over 100 micro inch ( $\mu$ " ) nickel layer.
- Accepts 22-26 AWG wires.

#### ● Mechanical Specification

- Insertion Life Cycle: 1,000 cycles (minimum) / I.D.C 250 cycles (minimum).

#### ● Electrical Specifications

- Insulation Resistance: 500M $\Omega$ .
- Contact Resistance: 20M $\Omega$ .
- Current Rating: 1.5 Amps.
- DC Resistance: Max.0.1 $\Omega$ .
- Dielectric Withstand Voltage: 1,000VAC RMS @ 60Hz/1 min.

#### ● Standards

Meets TIA/EIA 568B & ISO 11801.



24 Port Unshielded Panel



48 Port Unshielded Panel



24 Port Cat5e Shielded Patch Panel



24 & 48 Port Cat5e Unshielded Patch Panel

## Applications

- 1,000 Mbps Gigabit Ethernet (IEEE 802.3Z).
- 622 Mbps ATM.
- 155 Mbps ATM.
- 100 VG-Any LAN (IEEE 802.12).
- 100 Mbps TP-PMD.
- 100 Mbps Fast Ethernet (IEEE 802.3u).
- 100 Mbps CDDI.
- 10 Mbps Ethernet (IEEE 802.3).
- 4 Mbps & 16 Mbps Token-Ring (IEEE 802.5).
- ISDN.
- Analog voice.

## Ordering information

### Unshielded Category 5e Patch Panel:

Part No.	Description	Dimension	Wiring
AD-PP-16-C5e-A/B	UTP Category 5e 16 Ports Patch Panel	1.8"x19" 1U	T568A/B
AD-PP-24-C5e-A/B	UTP Category 5e 24 Ports Patch Panel	1.8"x19" 1U	T568A/B
AD-PP-32-C5e-A/B	UTP Category 5e 32 Ports Patch Panel	3.6"x19" 2U	T568A/B
AD-PP-48-C5e-A/B	UTP Category 5e 48 Ports Patch Panel	3.6"x19" 2U	T568A/B
AD-PP-72-C5e-A/B	UTP Category 5e 72 Ports Patch Panel	5.4"x19" 3U	T568A/B
AD-PP-96-C5e-A/B	UTP Category 5e 96 Ports Patch Panel	7.2"x19" 4U	T568A/B

### Unshielded Category 6 Patch Panel:

Part No.	Description	Dimension	Wiring
AD-PP-16-C6-A/B	UTP Category 6 16 Ports Patch Panel	1.8"x19" 1U	T568A/B
AD-PP-24-C6-A/B	UTP Category 6 24 Ports Patch Panel	1.8"x19" 1U	T568A/B
AD-PP-32-C6-A/B	UTP Category 6 32 Ports Patch Panel	3.6"x19" 2U	T568A/B
AD-PP-48-C6-A/B	UTP Category 6 48 Ports Patch Panel	3.6"x19" 2U	T568A/B
AD-PP-72-C6-A/B	UTP Category 6 72 Ports Patch Panel	5.4"x19" 3U	T568A/B
AD-PP-96-C6-A/B	UTP Category 6 96 Ports Patch Panel	7.2"x19" 4U	T568A/B

### Shielded Category 5e Patch Panel:

Part No.	Description	Dimension	Wiring
AD-PP-16-C5eS-A/B	FTP Category 5e 16 Ports Patch Panel	1.8"x19" 1U	T568A/B
AD-PP-24-C5eS-A/B	FTP Category 5e 24 Ports Patch Panel	1.8"x19" 1U	T568A/B
AD-PP-48-C5eS-A/B	FTP Category 5e 48 Ports Patch Panel	3.6"x19" 2U	T568A/B

### Shielded Category 6 Patch Panel:

Part No.	Description	Dimension	Wiring
AD-PP-16-C6S-A/B	FTP Category 6 16 Ports Patch Panel	1.8"x19" 1U	T568A/B
AD-PP-24-C6S-A/B	FTP Category 6 24 Ports Patch Panel	1.8"x19" 1U	T568A/B
AD-PP-48-C6S-A/B	FTP Category 6 48 Ports Patch Panel	3.6"x19" 2U	T568A/B

### UnShielded Category 5e Mini Panel:

Part No.	Description	Dimension	Wiring
AD-MP-12-C5e-A/B	UTP Category 5e 12 Ports Patch Panel	1.8"x10" 1U	T568A/B
AD-MP-12-C6-A/B	UTP Category 6 12 Ports Patch Panel	1.8"x10" 1U	T568A/B
AD-MP-12R	Rack for Mini Panel		



12 Port Cat5e  
Unshielded Vertical Patch Panel



## ■ Panel Solution

### ■ Telco Patch Panel

#### ● Features:

- Significant margin over ANSI/TIA-568-B & ISO/IEC 11801.
- Converts 50 pins TELCO cable to modular jack.
- Provide reliable performance up to Cat 5.
- Exceeds 10 Base-T (10 M Ethernet) & 100 Base-TX (100M Ethernet) performance.
- Support USOC, 10 Base T , WECO wiring.
- Standard size in EIA 19".

#### ● Physical Specifications

- Beryllium Copper Contact: 50 micro inch ( $\mu$ " ) gold-plated pins over 100 micro inch ( $\mu$ " ) nickel layer.
- Insertion Life Cycle: 750 cycles (minimum).

#### ● Electrical Specifications

- Insulation Resistance: 500M.  $\Omega$ .
- Contact Resistance: 20M.  $\Omega$ .
- Current Rating: 1.5 Amps.
- DC Resistance: Max. 0.1  $\Omega$ .
- Dielectric Withstand Voltage: 1,000VAC RMS @60Hz/1 min.

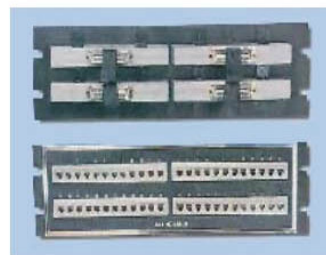
#### ● Applications

- 100 Mbps Ethernet(IEEE 802.3u).
- 10 Mbps Ethernet (IEEE 802.3).
- 4 Mbps & 16 Mbps Token-Ring (IEEE 802.5).
- ISDN.
- Analog voice.

#### ● Ordering Information.

Part No.	Description
AD-TP-24-6P4C-M-X	24 ports 6P4C to Telco Male patch panel
AD-TP-24-6P4C-F-X	24 ports 6P4C to Telco Female patch panel
AD-TP-24-8P4C-M-X	24 ports 8P4C to Telco Male patch panel
AD-TP-24-8P4C-F-X	24 ports 8P4C to Telco Female patch panel
AD-TP-24-6P6C-M-X	24 ports 6P6C to Telco Male patch panel
AD-TP-24-6P6C-F-X	24 ports 6P6C to Telco Female patch panel
AD-TP-24-8P8C-M-X	24 ports 8P8C to Telco Male patch panel
AD-TP-24-8P8C-F-X	24 ports 8P8C to Telco Female patch panel
AD-TP-48-6P4C-M-X	48 ports 6P4C to Telco Male patch panel
AD-TP-48-6P4C-F-X	48 ports 6P4C to Telco Female patch panel
AD-TP-48-8P4C-M-X	48 ports 8P4C to Telco Male patch panel
AD-TP-48-8P4C-F-X	48 ports 8P4C to Telco Female patch panel
AD-TP-48-6P6C-M-X	48 ports 6P6C to Telco Male patch panel
AD-TP-48-6P6C-F-X	48 ports 6P6C to Telco Female patch panel
AD-TP-48-8P8C-M-X	48 ports 8P8C to Telco Male patch panel
AD-TP-48-8P8C-F-X	48 ports 8P8C to Telco Female patch panel

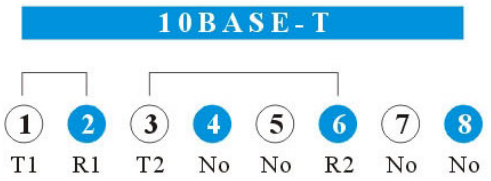
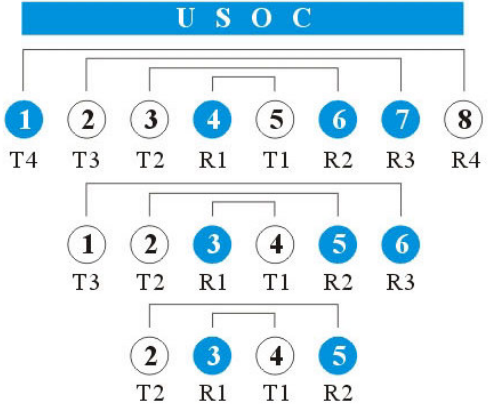
X:  
A- USOC Wiring  
B- 10 Base-T Wiring  
C- T 568B /258A Wiring



Telco Patch Panel



SCHEDULE1 (USOC)4 WIRE	SCHEDULE2 (USOC)6 WIRE	SCHEDULE3 (USOC)8 WIRE	SCHEDULE4 TIA 568B/258A	SCHEDULE5 (10BASE-T)
50POSN 4W USOC TELCO CHNI# PIN#	50POSN 4W USOC TELCO CHNI# PIN#	50POSN 4W USOC TELCO CHNI# PIN#	50POSN 4W USOC TELCO CHNI# PIN#	50POSN 4W USOC TELCO CHNI# PIN#
26 4 1 3	26 4 1 3	26 5 1 4	26 5 1 4	26 1 1 2
27 1 2 2 5	27 1 2 2 5	27 3 2 6	27 1 2 2	27 1 3 2 6
28 4 3 3	28 1 3 6	28 2 3 7	28 3 3 6	28 1 3 2
29 2 4 5	29 4 4 3	29 1 4 8	29 7 4 8	29 2 3 4 6
30 4 5 3	30 2 2 5 5	30 5 5 4	30 5 5 4	30 1 5 2
31 3 6 5	31 1 6 6	31 3 6 6	31 1 6 2	31 3 3 6 6
32 4 7 3	32 4 7 3	32 2 7 7	32 3 7 6	32 1 7 2
33 4 8 5	33 3 8 5	33 1 8 8	33 7 8 8	33 4 3 8 6
34 4 9 3	34 1 9 6	34 5 9 4	34 5 9 4	34 1 9 2
35 5 10 5	35 4 10 3	35 3 10 6	35 1 10 2	35 5 3 10 6
36 4 11 3	36 4 2 11 5	36 2 11 7	36 3 11 6	36 1 11 2
37 6 12 5	37 1 12 6	37 1 12 8	37 7 12 8	37 6 3 12 6
38 4 13 3	38 4 13 3	38 5 13 4	38 5 13 4	38 1 13 2
39 7 14 5	39 5 2 14 5	39 3 14 6	39 1 14 2	39 7 3 14 6
40 4 15 3	40 1 15 6	40 2 15 7	40 3 15 6	40 1 15 2
41 8 16 5	41 4 16 3	41 1 16 8	41 7 16 8	41 8 3 16 6
42 4 17 3	42 6 2 17 5	42 5 17 4	42 5 17 4	42 1 17 2
43 9 18 5	43 1 18 6	43 3 18 6	43 1 18 2	43 9 3 18 6
44 4 19 3	44 4 19 3	44 2 19 7	44 3 19 6	44 1 19 2
45 10 20 5	45 7 2 20 5	45 1 20 8	45 7 20 8	45 10 3 20 6
46 4 21 3	46 1 21 6	46 5 21 4	46 5 21 4	46 1 21 2
47 11 22 5	47 4 22 3	47 3 22 6	47 1 22 2	47 11 3 22 6
48 4 23 3	48 8 2 23 5	48 6 2 23 7	48 6 3 23 6	48 1 23 2
49 12 24 5	49 1 24 6	49 1 24 8	49 7 24 8	49 12 3 24 6
50 - 25 -	50 - 25 -	50 - 25 -	50 - 25 -	50 - 25 -





## ■ Panel Solution

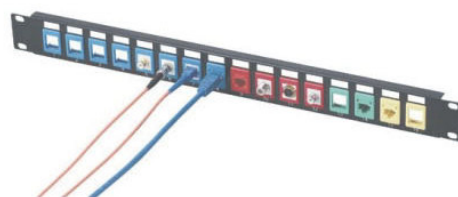
### ■ Blank Patch Panel

#### ● Features:

- Available in 16, 24, 32, and 48 ports.
- Standard size in EIA 19".
- Exchangeable multimedia inserts for different connectors.
- Writable & erasable marking surface for each port on the front panel.

#### ● Ordering Information

Part No.	Description	Dimension
AD-BP-16	16 ports Blank Patch Panel	1.8"x19" 1U
AD-BP-24	24 ports Blank Patch Panel	1.8"x19" 2U
AD-BP-32	32 ports Blank Patch Panel	3.6"x19" 2U
AD-BP-48	48 ports Blank Patch Panel	5.4"x19" 3U



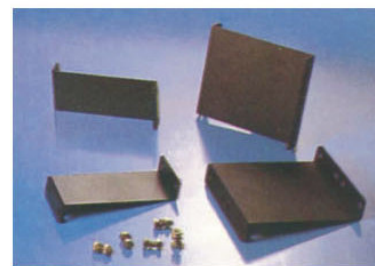
### ■ Mounting Bracket

#### ● Ordering information

Part No.	Description
AD-MB-1U	Mounting Bracket set in 1U
AD-MB-2U	Mounting Bracket set in 2U
AD-MB 100-2U	Mounting Bracket set in 2U Depth 100mm
AD-MB 100-3U	Mounting Bracket set in 3U Depth 100mm
AD-MB 100-4U	Mounting Bracket set in 4U Depth 100mm
AD-MB 100-6U	Mounting Bracket set in 6U Depth 100mm
AD-MB 250-2U	Mounting Bracket set in 2U Depth 250mm
AD-MB 250-3U	Mounting Bracket set in 3U Depth 250mm
AD-MB 250-4U	Mounting Bracket set in 4U Depth 250mm
AD-MB 250-6U	Mounting Bracket set in 6U Depth 250mm



16 Port Blank  
Patch Panel



2U & 4U Mounting Bracket



16/32/48 Port Blank  
Patch Panel